

Seeff



Mariam Rahman
078 367 7340
mariam.rahman@seeff.com

Contact Constantia

021 7945252

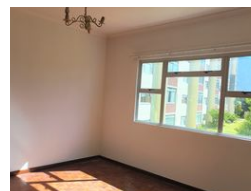
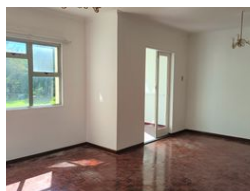
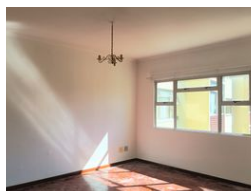
High Constantia House
Cnr Main & Groot Constantia Roads
Constantia
7806

2 Bedroom Apartment For Sale in Claremont



SOLE MANDATE

Web Ref RLS983922



R1,495,000



2



1.5

Monthly Bond Repayment R15,177.67

Calculated over 20 years at 10.75% with no deposit.

Transfer Costs R45,635.00

Bond Costs R28,990.00

These calculations are only a guide. Please ask your conveyancer for exact calculations.

Monthly Levy R2,059

Monthly Rates R520

Enjoy ample living space in the sought-after Claremont neighbourhood

Spacious and tidy 1st-floor apartment with parquet flooring throughout. The open-plan living and dining area opens to a large enclosed balcony that offers stunning mountain views. The separate tiled kitchen provides ample cupboard and countertop space, along with plumbing for one appliance.

The family bathroom includes a bath, a shower over the bath, and a separate toilet. The main double bedroom features built-in cupboards (BICS), and there is also a second double bedroom with BICS.

Additional features include a bonus undercover parking bay.

Lynwood Gardens offers a large communal garden, a braai area, and a children's play area. The property has 24-hour manned security with CCTV, prepaid water, and excellent security measures in place, with a building manager on duty.

Conveniently located near shopping amenities and with...

Features

Interior

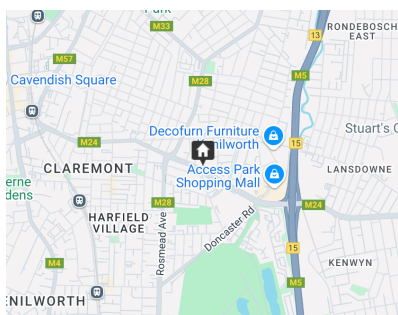
Bedrooms	2
Bathrooms	1.5
Kitchens	1
Recep. Rooms	2
Furnished	No

Exterior

Carports / Parkings	1
Security	Yes
Pool	No
Views	True

Sizes

Floor Size	83m ²
------------	------------------



<https://southernsuburbs.seeff.com>