



Francois Venter
083 735 1830
francois.venter@seeff.com



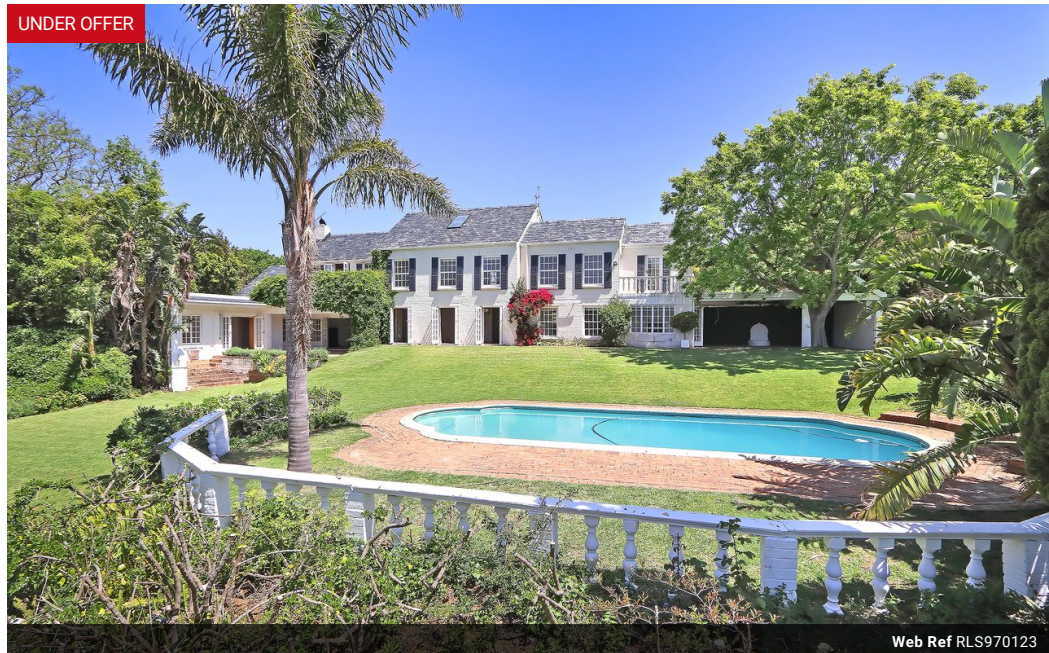
Liza Snijman
082 805 7005
liza.s@seeff.com

Contact The Uppers - Constantia

021 7945252

High Constantia House
Cnr Main & Groot Constantia Roads
Constantia
7806

UNDER OFFER



Web Ref RLS970123



R21,000,000

Monthly Bond Repayment R216,759.56
Calculated over 20 years at 11% with no deposit.

Transfer Costs R2,402,371.00 **Bond Costs** R132,285.00

These calculations are only a guide. Please ask your conveyancer for exact calculations.

Monthly Rates R6,328

4 3 3

Family home in the prestigious avenues of Constantia Upper

Seize the rare opportunity to own a gracious 464m² double storey family home, perfectly nestled beside the serene greenbelt in the exclusive Constantia Upper. Set on a generous 2634sqm sectionalized erf, this exquisite residence is surrounded by an enchanting garden with sweeping North-West facing mountain views, offering tranquility and luxury in equal measure.

This elegant home features 4 bedrooms, all located upstairs, each with beautiful North facing views. The main bedroom is bathed in natural light, with breathtaking mountain vistas. Its luxurious en-suite bathroom boasts a standalone bath, perfectly positioned in front of a picture window, a double vanity, bidet and heated towel rails. Bedroom 2 offers not only ample space but also a cozy lounge area with exposed rafters, a wood-burning fireplace and French doors...

Features

Pets Allowed Yes

Interior

Bedrooms 4
Bathrooms 3
Kitchens 1
Recep. Rooms 2
Furnished No

Exterior

Garages 3
Carports / Parkings 1
Security Yes
Dom. Accom. 1
Pool Yes
Views False

Sizes

Floor Size 464m²
Land Size 2,634m²

