



Faith Knight
083 950 8883
faithk@seeff.com



Nikki Edenborough
082 417 7807
nikki.e@seeff.com

Contact Constantia

021 7945252

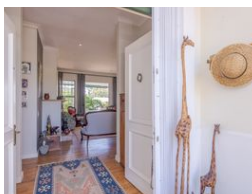
High Constantia House
Cnr Main & Groot Constantia Roads
Constantia
7806

3 Bedroom House For Sale in Constantia



SOLE MANDATE

Web Ref RLS976447



R8,500,000

🛏 3 🚿 2 🏠 2

Monthly Bond Repayment R86,294.46

Calculated over 20 years at 10.75% with no deposit.

Transfer Costs R810,214.00 **Bond Costs** R80,035.00

These calculations are only a guide. Please ask your conveyancer for exact calculations.

Monthly Levy R2,650 **Monthly Rates** R2,700

Exclusive Estate Bridlewood Close - Constantia Hills

Exclusive sole mandate - view by appointment with Faith.

3 bedrooms, 2 bathrooms, plus a studio/office, large open plan lounge and dining room that leads to the kitchen. Double garage with direct access. Large covered front patio and gorgeous garden. Bridlewood Close is a well managed sought after small Estate.

RECEPTION ROOMS:

Step through the covered entrance into a spacious lounge area, completed with wood burning fireplace.

Open plan dining with space for a 10-seater dining table.

Large glass doors open up onto the patio, bringing in lots of light into this reception area.

STUDY/STUDIO:

Off the garage and opening up onto the garden is a studio which can be used as a family room, office or work from home.

KITCHEN:

Dining room is conveniently situated next to the kitchen which has granite tops, gas hob and electric...

Features

Pets Allowed Yes

Interior

Bedrooms	3
Bathrooms	2
Kitchens	1
Recep. Rooms	2
Studies	1
Furnished	No

Exterior

Garages	2
Carports / Parkings	2
Security	Yes
Pool	No
Views	False

Sizes

Floor Size	151m ²
Land Size	752m ²

