

# Seeff



**Chad Belcher**  
073 629 8601  
chad.belcher@seeff.com



**Sean Guy**  
082 491 3099  
seang@seeff.com

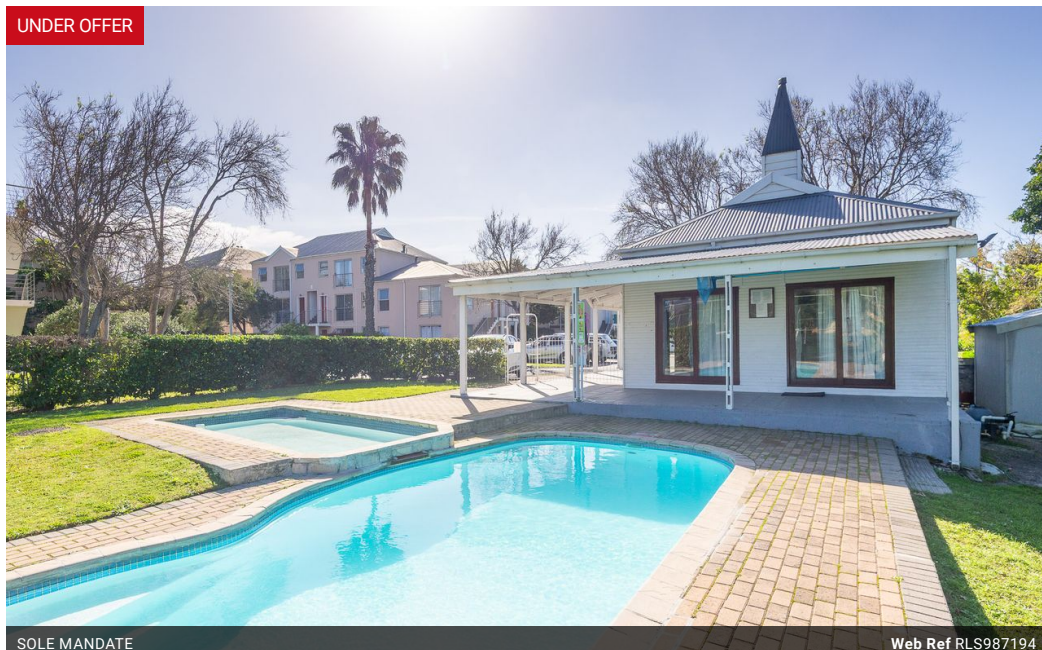
Contact Constantia

021 7945252

High Constantia House  
Cnr Main & Groot Constantia Roads  
Constantia  
7806

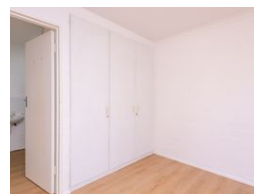
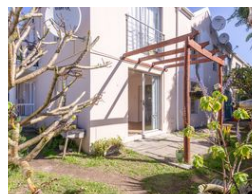
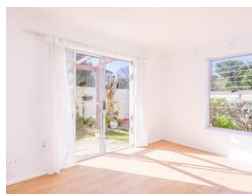
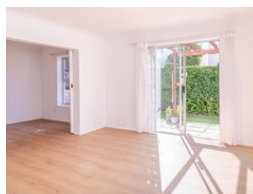
## 1 Bedroom Apartment For Sale in Diep River

UNDER OFFER



SOLE MANDATE

Web Ref RLS987194



**R1,095,000**

1 1

**Monthly Bond Repayment** R10,932.26

Calculated over 20 years at 10.5% with no deposit.

**Transfer Costs** R32,851.00 **Bond Costs** R25,220.00

These calculations are only a guide. Please ask your conveyancer for exact calculations.

**Monthly Levy** R1,644 **Monthly Rates** R170

### Secure living

Located in the well-run and sought after Avondale Gardens complex in Diep River. This 1-bedroom ground floor north facing apartment is ideal for those seeking a secure, comfortable lifestyle.

The apartment features a spacious open plan kitchen and counter space for appliances. This flows into the lounge with attractive Vinyl flooring throughout the apartment. Opening onto a sunny north facing garden area.

The bedroom has Vinyl flooring, built in cupboards and an en-suite bathroom with a bath .

Additional features include:

One secure parking bay

Plenty visitors bays

24 Hour security

Electric Fence , Fibre ready , communal washing lines, Swimming pool & tennis court.

### Features

#### Interior

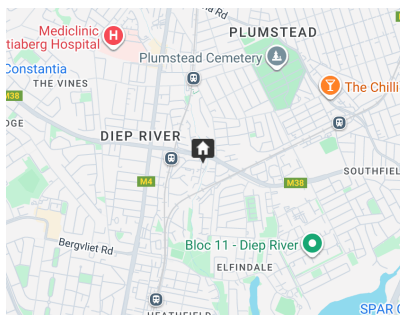
|              |    |
|--------------|----|
| Bedrooms     | 1  |
| Bathrooms    | 1  |
| Kitchens     | 1  |
| Recep. Rooms | 1  |
| Furnished    | No |

#### Exterior

|                     |       |
|---------------------|-------|
| Carports / Parkings | 1     |
| Security            | Yes   |
| Pool                | Yes   |
| Views               | False |

#### Sizes

|            |                  |
|------------|------------------|
| Floor Size | 40m <sup>2</sup> |
|------------|------------------|



<https://southernsuburbs.seeff.com>