



**Chad Belcher**  
073 629 8601  
chad.belcher@seeff.com

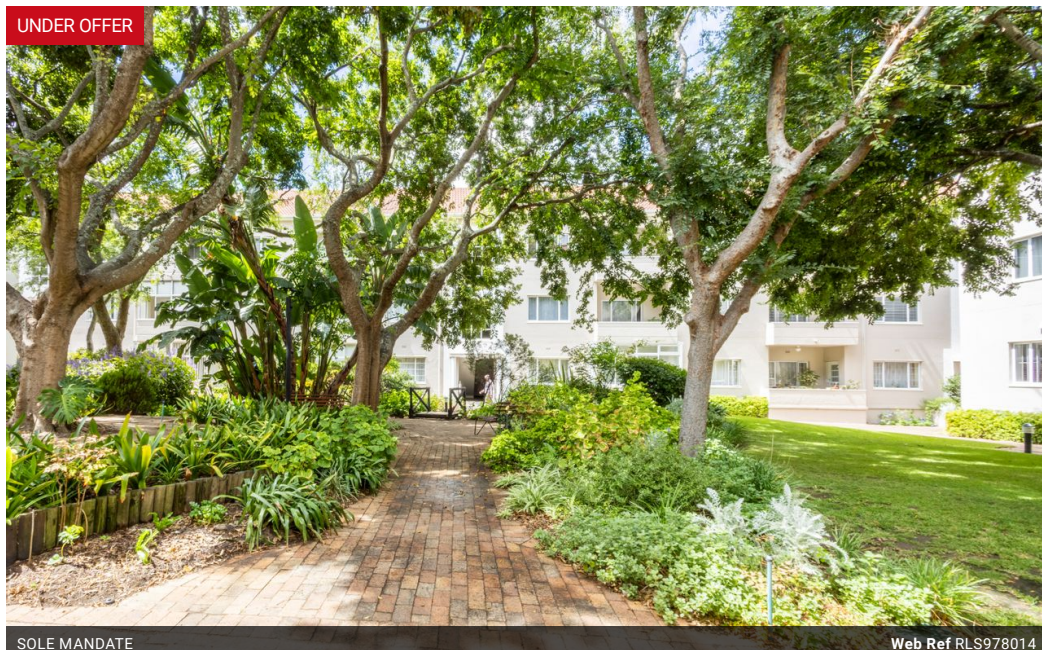


**Sean Guy**  
082 491 3099  
seang@seeff.com

Contact Constantia

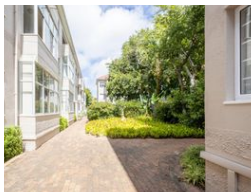
021 7945252

High Constantia House  
Cnr Main & Groot Constantia Roads  
Constantia  
7806



SOLE MANDATE

Web Ref RLS978014



### R1,795,000

🛏 2 🚿 1 🚗 1

**Monthly Bond Repayment** R18,223.36

Calculated over 20 years at 10.75% with no deposit.

**Transfer Costs** R60,739.00 **Bond Costs** R30,875.00

These calculations are only a guide. Please ask your conveyancer for exact calculations.

**Monthly Levy** R2,600 **Monthly Rates** R1,000

### Style revival

Wellington Mews needs no introduction to the discerning purchaser.

Highly regarded for its park-like inner gardens and genteel lifestyle, this landmark apartment estate offers an address where peace of mind, tranquility, security and attentive management are the benchmarks.

This first floor corner apartment offers  
Entrance hall leading to spacious living room and onto a west/mountain facing enclosed balcony.  
Two very large bedrooms with built in cupboards.  
Generously proportioned bathroom - shower over bath.  
Large, modern kitchen with distinct scullery/utilities alcove  
Parking bay with easy access  
Single garage with automated door

Both bedrooms and living feature newly laid wall to wall carpets with a good chance of parquet flooring beneath.

All in all, this good looking apartment presents as one of character, convenience...

### Features

#### Interior

Bedrooms	2
Bathrooms	1
Kitchens	1
Recep. Rooms	2
Furnished	No

#### Exterior

Garages	1
Carports / Parkings	1
Security	Yes
Pool	No
Views	False

#### Sizes

Floor Size	97m²
------------	------

