



Sean Guy
082 491 3099
seang@seeff.com



Chad Belcher
073 629 8601
chad.belcher@seeff.com

Contact Constantia

021 7945252

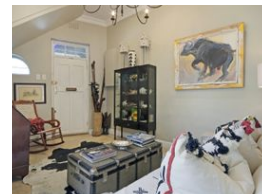
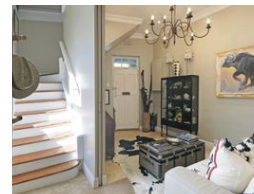
High Constantia House
Cnr Main & Groot Constantia Roads
Constantia
7806

2 Bedroom Townhouse For Sale in Wynberg Upper



SOLE MANDATE

Web Ref RLS981352



R4,995,000

2 2

Monthly Bond Repayment R51,557.81

Calculated over 20 years at 11% with no deposit.

Transfer Costs R401,795.00 **Bond Costs** R61,035.00

These calculations are only a guide. Please ask your conveyancer for exact calculations.

Monthly Levy R1,640 **Monthly Rates** R1,640

Design intervention

Perfectly located within the heart of Chelsea Village, this remarkably curated home offers an enviable lifestyle that is seamlessly aligned with the rich history and character of the area. Beauchamp Place, on the corner of Wolfe and Riebeeck Streets (and neighbour to Four & Twenty Café) comprises just three homes. Built at a time when size, individuality and integrity mattered, this refined and now renovated home presents with every creature comfort, a chic modernity and is defined by luxury without excess.

An over-riding feature of this home is its flexibility - a home that may be tailored to the particular needs of a new owner. The versatility of this genteel residence is complemented by the ease of maintenance and upkeep. Whether a permanent residence or a pied de terre, this unique space will meet the needs of those...

Features

Pets Allowed	Yes				
Interior		Exterior		Sizes	
Bedrooms	2	Carports / Parkings	1	Floor Size	126m²
Bathrooms	2	Security	Yes		
Kitchens	1	Pool	No		
Recep. Rooms	2	Views	True		
Studies	1				
Furnished	No				

